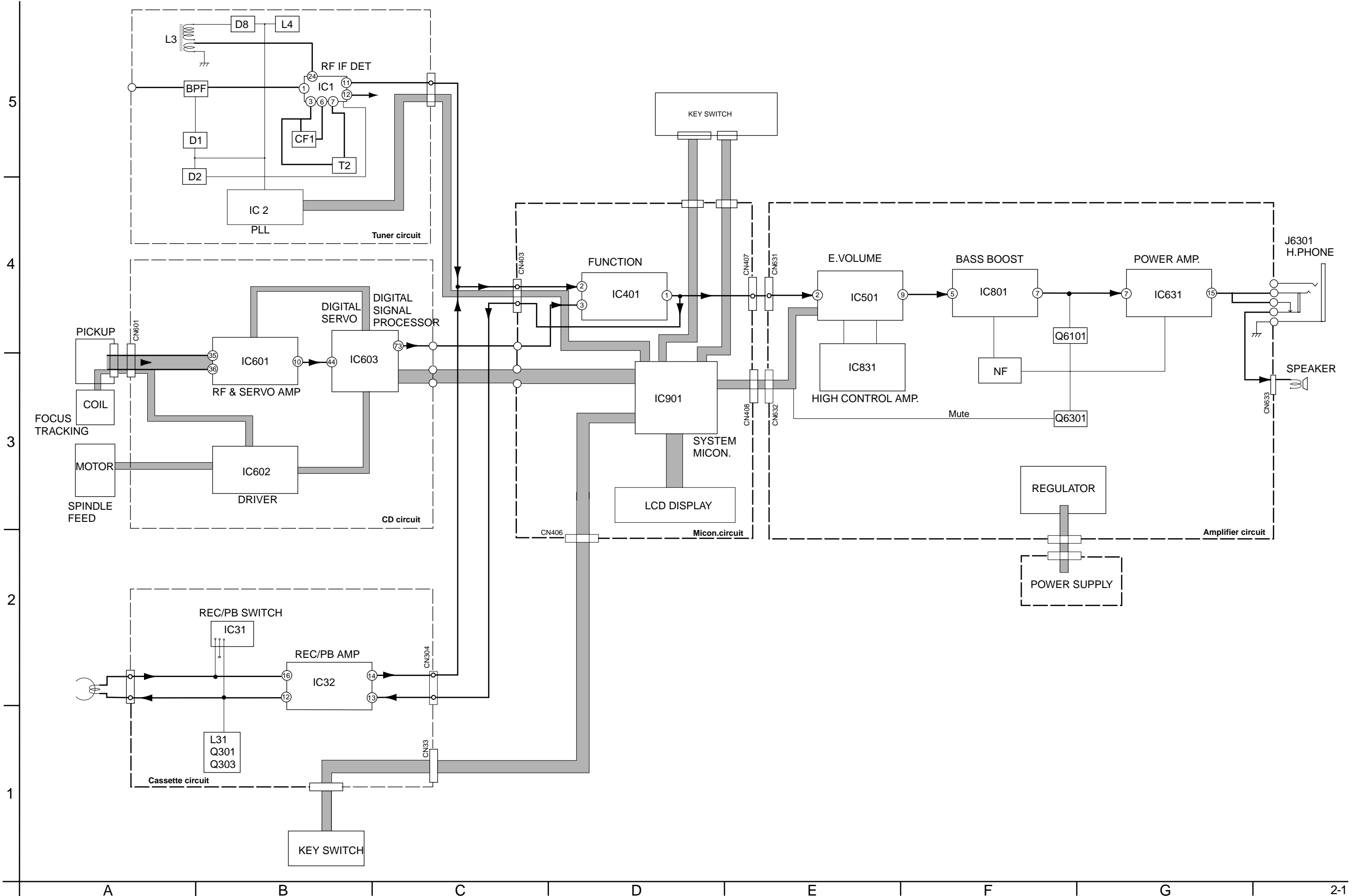


# Block diagram



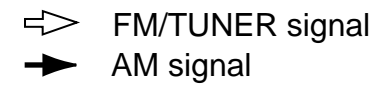
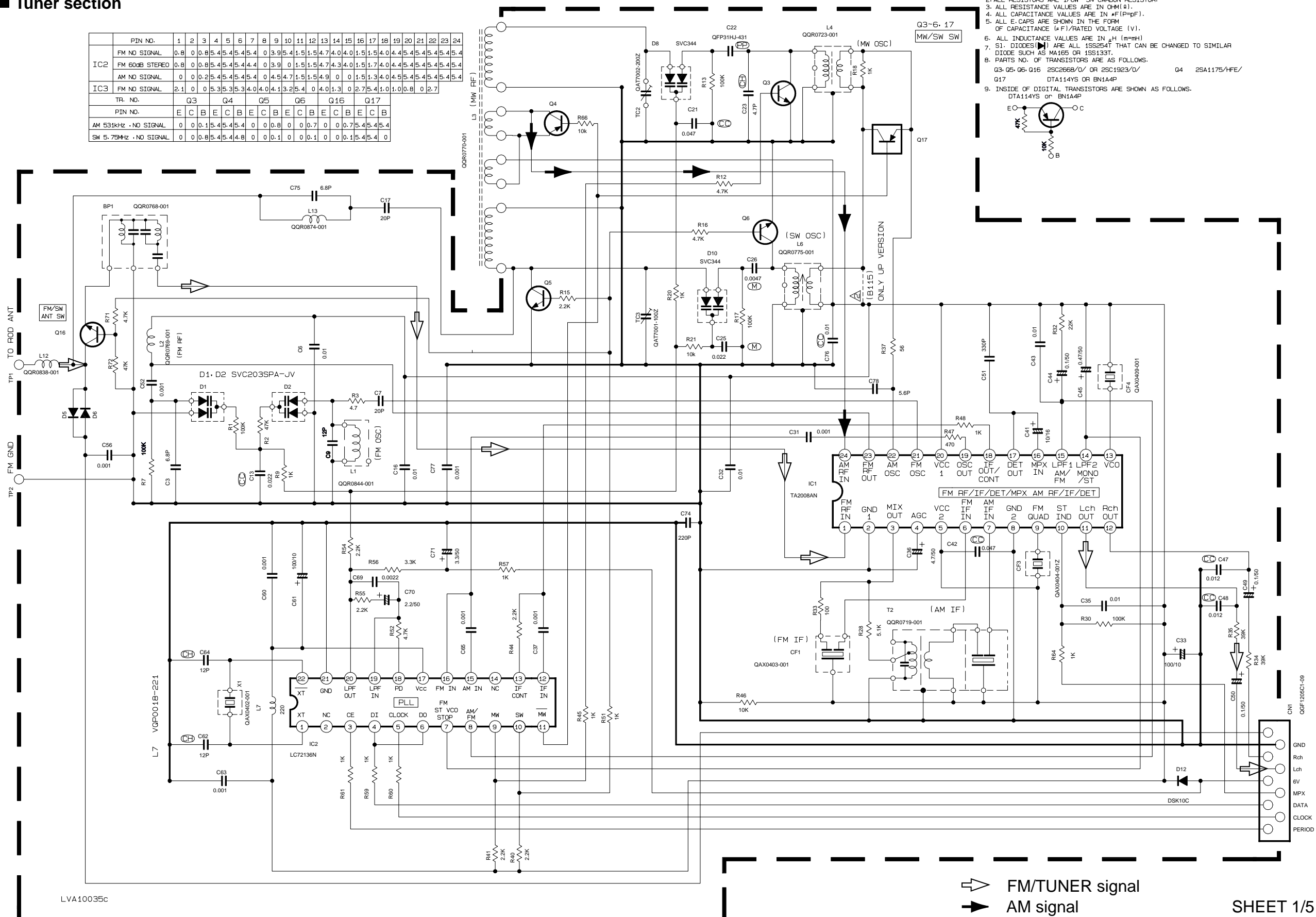
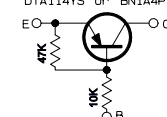
# Standard schematic diagrams

## Tuner section

PIN NO.	1	2	3	4	5	6	7	8	9	10	11	12	13	14	15	16	17	18	19	20	21	22	23	24
IC2	FM NO SIGNAL	0.8	0	0.8	5.4	5.4	5.4	5.4	0	3.9	5.4	1.5	4.7	4.0	1.5	1.5	4.0	4.4	5.4	5.4	5.4	5.4	5.4	5.4
IC3	FM NO SIGNAL	2.1	0	0	2.5	4.5	4.5	4.5	0	4.5	4.7	1.5	1.5	4.9	0	0	1.5	1.3	4.0	4.5	5.4	5.4	5.4	5.4
TR. NO.	Q3	Q4	Q5	Q6	Q16	Q17																		
PIN NO.	E	C	B	E	C	B	E	C	B	E	C	B	E	C	B	E	C	B						
AM 531KHz · NO SIGNAL	0	0	0.1	5.4	5.4	5.4	0	0	0.8	0	0	0.7	0	0	0.7	5.4	5.4	5.4						
SW 5.75MHz · NO SIGNAL	0	0	0.8	5.4	5.4	4.8	0	0	0.1	0	0	0.1	0	0	0.1	5.4	5.4	5.4						

NOTES

- VOLTAGES ARE DC-MEASURED WITH A DIGITAL VOLT METER
- ALL RESISTORS ARE 1/6W 5% CARBON RESISTOR.
- ALL RESISTANCE VALUES ARE IN OHM(Ω).
- ALL CAPACITANCE VALUES ARE IN #F(P=pF).
- ALL E. CAPS ARE SHOWN IN THE FORM OF CAPACITANCE (#F)/RATED VOLTAGE (V).
- ALL INDUCTANCE VALUES ARE IN μH (m=μH)
- S1. DIODES (D1) ARE ALL 1SS254T THAT CAN BE CHANGED TO SIMILAR DIODE SUCH AS MA165 OR 1SS133T.
- PARTS NO. OF TRANSISTORS ARE AS FOLLOWS:  
Q3-Q5-Q6-Q16 2SC2668/O/ OR 2SC1923/O/  
Q17 DTA114YS OR 8N144P
- INSIDE OF DIGITAL TRANSISTORS ARE SHOWN AS FOLLOWS.  
DTA114YS OR 8N144P



TO MICOM PMB: CN403 (VDH5232-007SV)

SHEET 3/5

5

4

3

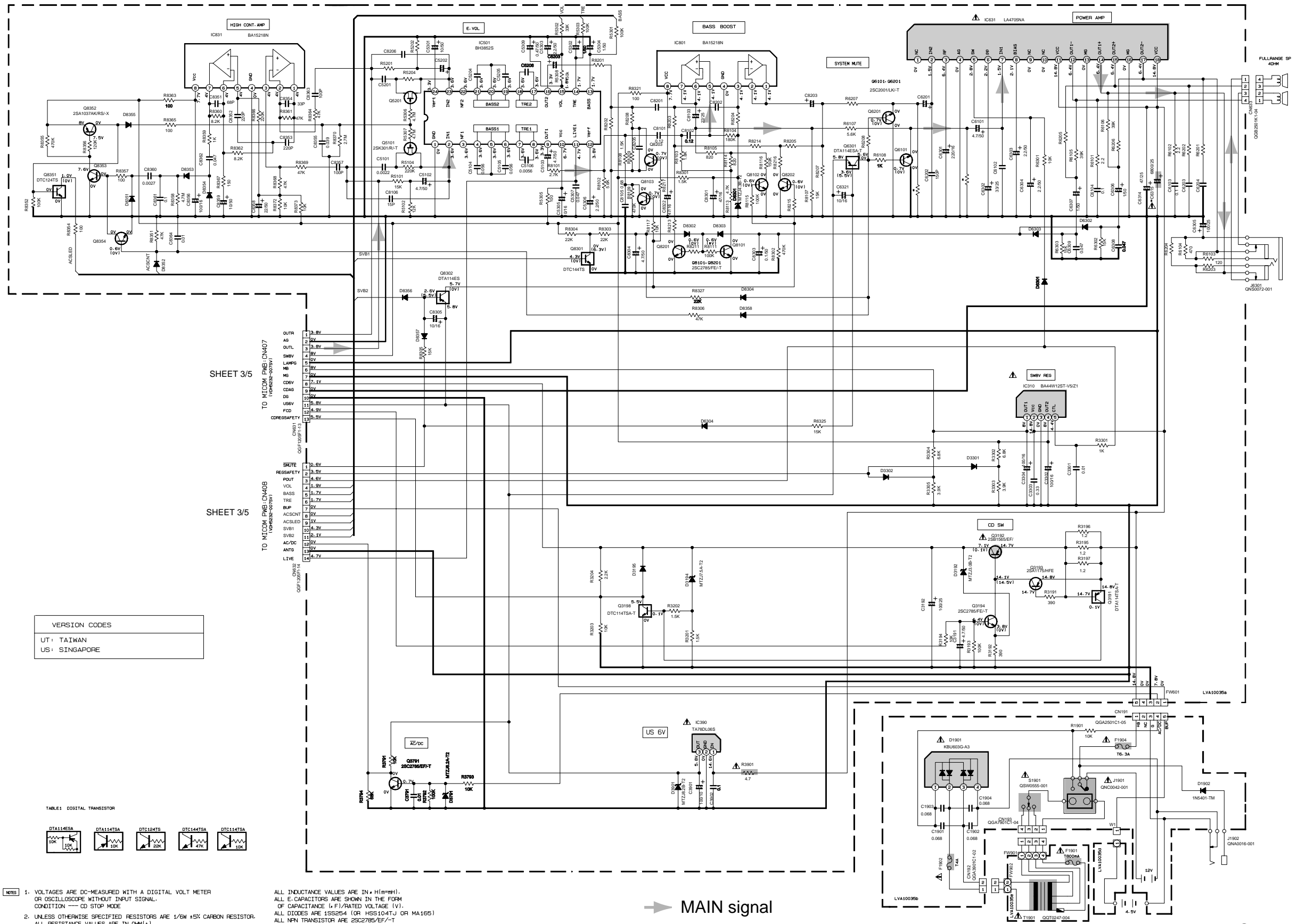
2

1

A B C 2-2 D E F G H

■ Main amplifier section

5  
4  
3  
2  
1



SHEET 3/5  
TO MICOM PWB: CN407  
(1000000-000001)

SHEET 3/5  
TO MICOM PWB: CN408  
(1000000-000001)

VERSION CODES

UT: TAIWAN
US: SINGAPORE

TABLE1: DIGITAL TRANSISTOR

--	--	--	--	--

NOTES

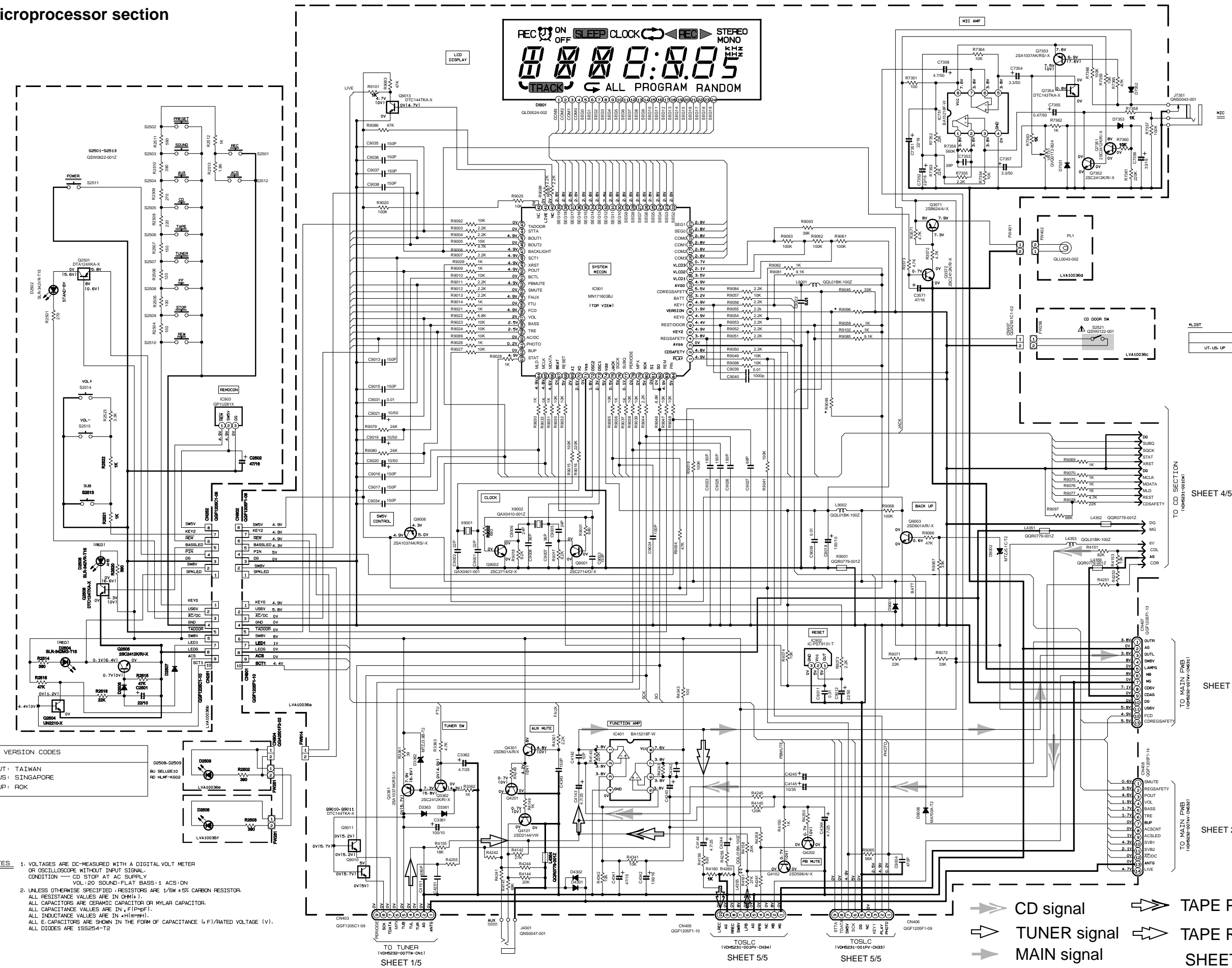
1. VOLTAGES ARE DC-MEASURED WITH A DIGITAL VOLT METER OR OSCILLOSCOPE WITHOUT INPUT SIGNAL. CONDITION --- CD STOP MODE
2. UNLESS OTHERWISE SPECIFIED RESISTORS ARE 1/8W ±5% CARBON RESISTOR. ALL RESISTANCE VALUES ARE IN OHM(+).

ALL INDUCTANCE VALUES ARE IN μH(m=μH). ALL E-CAPACITORS ARE SHOWN IN THE FORM OF CAPACITANCE (μ,F)/RATED VOLTAGE (V). ALL DIODES ARE 1SS254 (OR HSS104T,U OR MA165) ALL NPN TRANSISTOR ARE 2SC2785/FE/-T ALL PNP TRANSISTOR ARE 2SA1175/HFE/-T

➔ MAIN signal

System microprocessor section

5  
4  
3  
2  
1



VERSION CODES  
 UT: TAIWAN  
 US: SINGAPORE  
 UP: ROK

- NOTES
- VOLTAGES ARE DC-MEASURED WITH A DIGITAL VOLT METER OR OSCILLOSCOPE WITHOUT INPUT SIGNAL. CONDITION --- CD STOP AT AC SUPPLY. VOL: 20 SOUND-FLAT BASS: 1 ACS: ON.
  - UNLESS OTHERWISE SPECIFIED, RESISTORS ARE 1/16W ±5% CARBON RESISTOR. ALL RESISTANCE VALUES ARE IN Ω (MΩ). ALL CAPACITORS ARE CERAMIC CAPACITOR OR MYLAR CAPACITOR. ALL CAPACITANCE VALUES ARE IN pF (µF). ALL INDUCTANCE VALUES ARE IN mH (µH). ALL C-CAPACITORS ARE SHOWN IN THE FORM OF CAPACITANCE (µF)/RATED VOLTAGE (V). ALL DIODES ARE 1SS254-T2.

UT. US. UP	R0906	R0909
	6K	10K

SHEET 4/5

SHEET 2/5

SHEET 2/5

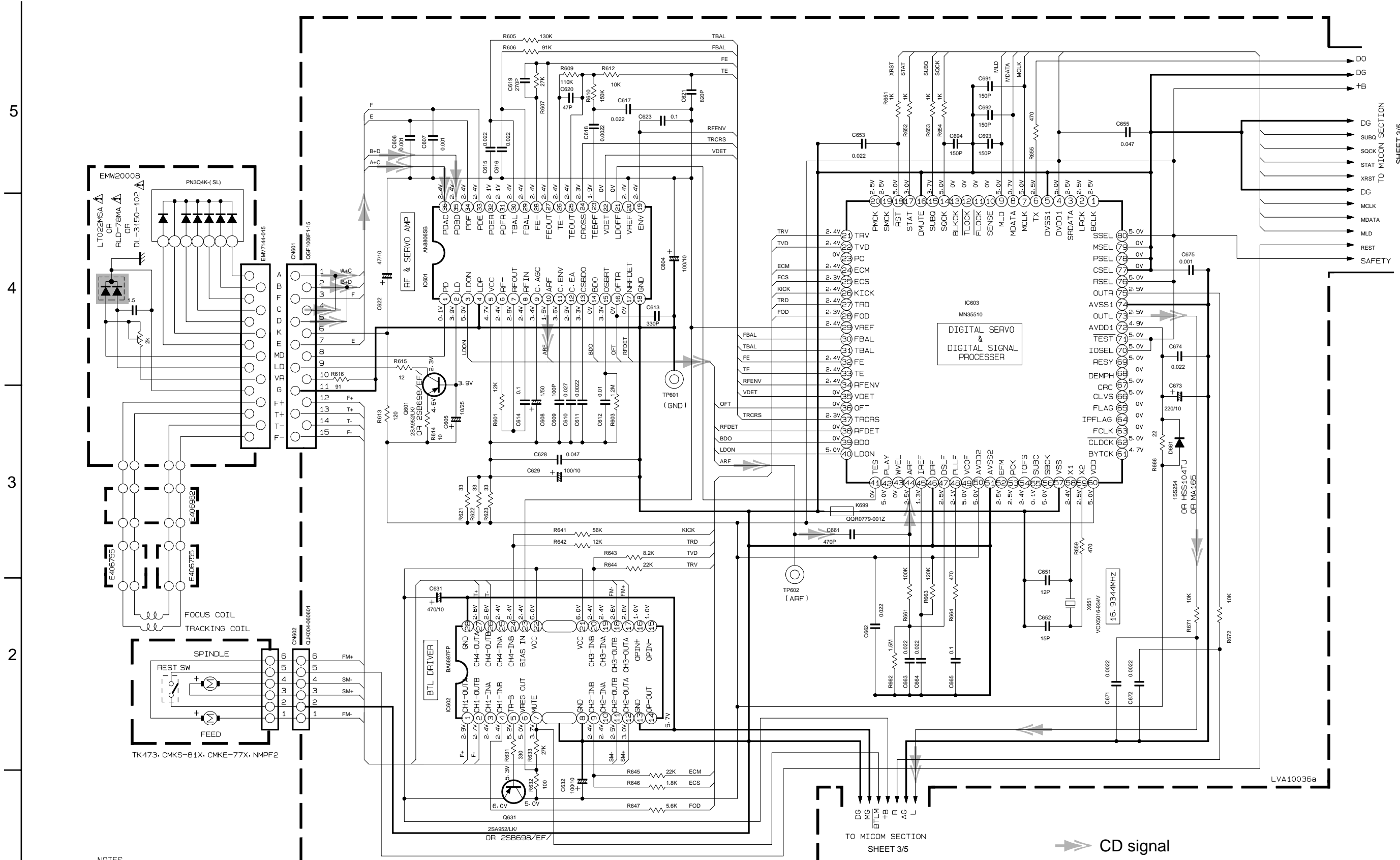
TO TUNER (V06032-00774-CN1) SHEET 1/5

TO TOSLC (V06033-0011P-CN4) SHEET 5/5

TO TOSLC (V06033-0011P-CN3) SHEET 5/5

A B C 2-4 D E F G H

CD servo section

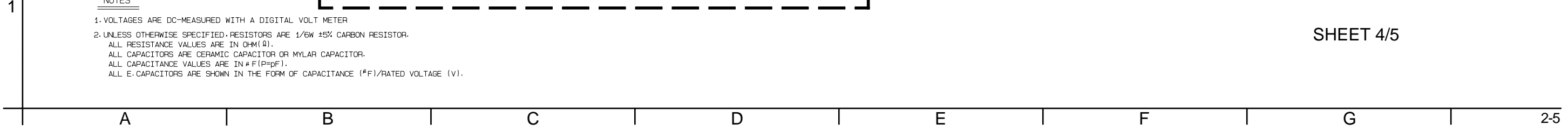


SHEET 3/5

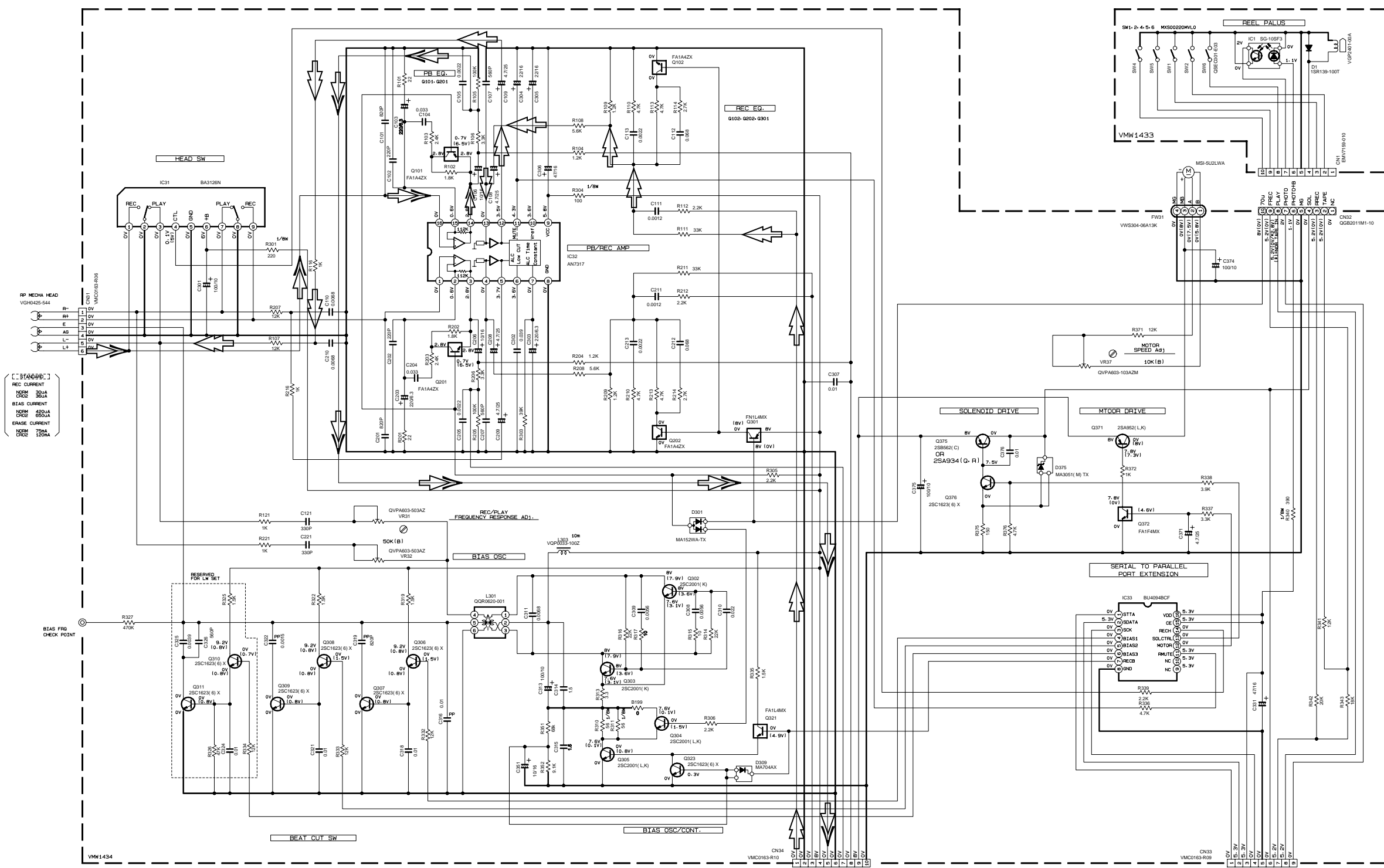
NOTES

- 1. VOLTAGES ARE DC-MEASURED WITH A DIGITAL VOLT METER
- 2. UNLESS OTHERWISE SPECIFIED, RESISTORS ARE 1/6W ±5% CARBON RESISTOR. ALL RESISTANCE VALUES ARE IN OHM(Ω). ALL CAPACITORS ARE CERAMIC CAPACITOR OR MYLAR CAPACITOR. ALL CAPACITANCE VALUES ARE IN # F(P=pF). ALL E-CAPACITORS ARE SHOWN IN THE FORM OF CAPACITANCE (#F)/RATED VOLTAGE (V).

➔ CD signal



■ Cassette amplifier section



REC CURRENT  
NOM 300mA  
BIAS CURRENT  
NOM 4500uA  
ERASE CURRENT  
NOM 750mA

NOTES  
1. VOLTAGES ARE DC-MEASURED WITH A DIGITAL VOLT METER OR OSCILLOSCOPE WITHOUT INPUT SIGNAL. CONDITION: MECHA STOP MODE.  
2. UNLESS OTHERWISE SPECIFIED, RESISTORS ARE 1/10W 1% METAL GLAZE RESISTOR. ALL RESISTANCE VALUES ARE IN OHM(S). ALL CAPACITORS ARE CERAMIC CAPACITOR OR MYLAR CAPACITOR. ALL CAPACITANCE VALUES ARE IN nF (nPF). ALL INDUCTANCE VALUES ARE IN mH (mHMS). ALL E. CAPACITORS ARE SHOWN IN THE FORM OF CAPACITANCE (nF)/RATED VOLTAGE (V). POLYPROPYLENE CAPACITOR.

SHEET 3/5

SHEET 3/5

PARTS	NAME	REF. NO
[Resistor Symbol]	FA142X	Q101-Q201
[Transistor Symbol]	FN140X	Q301
[Transistor Symbol]	FA140X	Q321
[Transistor Symbol]	FA1F40X	Q371

➡ TAPE P.B. signal  
➡ TAPE REC. signal

SHEET 5/5

5

4

3

2

1

# Printed circuit boards

■ Main board

■ Power supply board

■ Main board

■ Tuner board

■ Power Trans. board

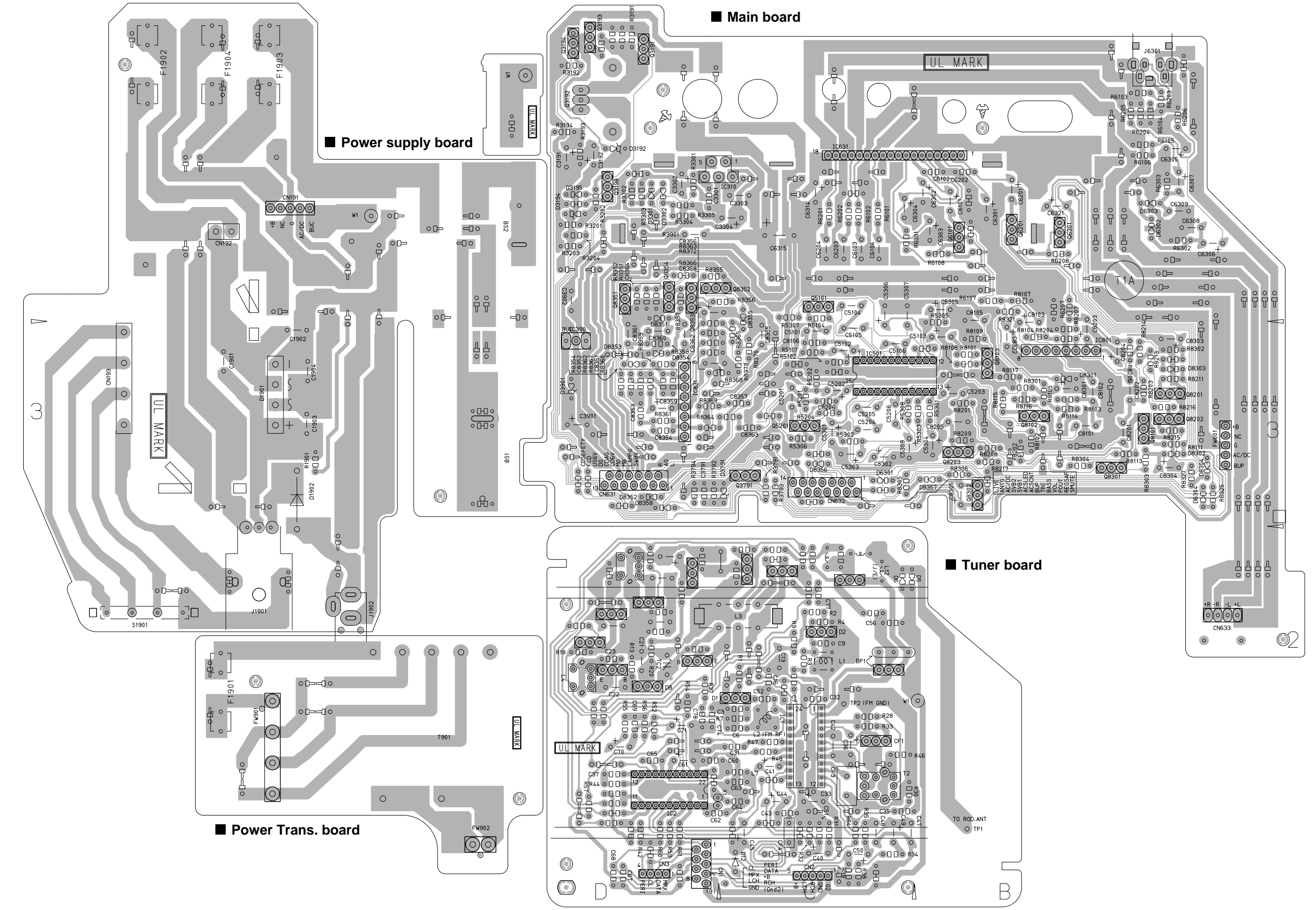
5

4

3

2

1



A

B

C

D

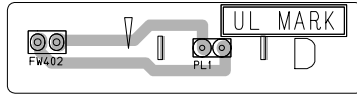
E

F

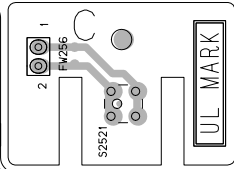
G

SYSTEM CONTROL BOARD Block No. 0 1

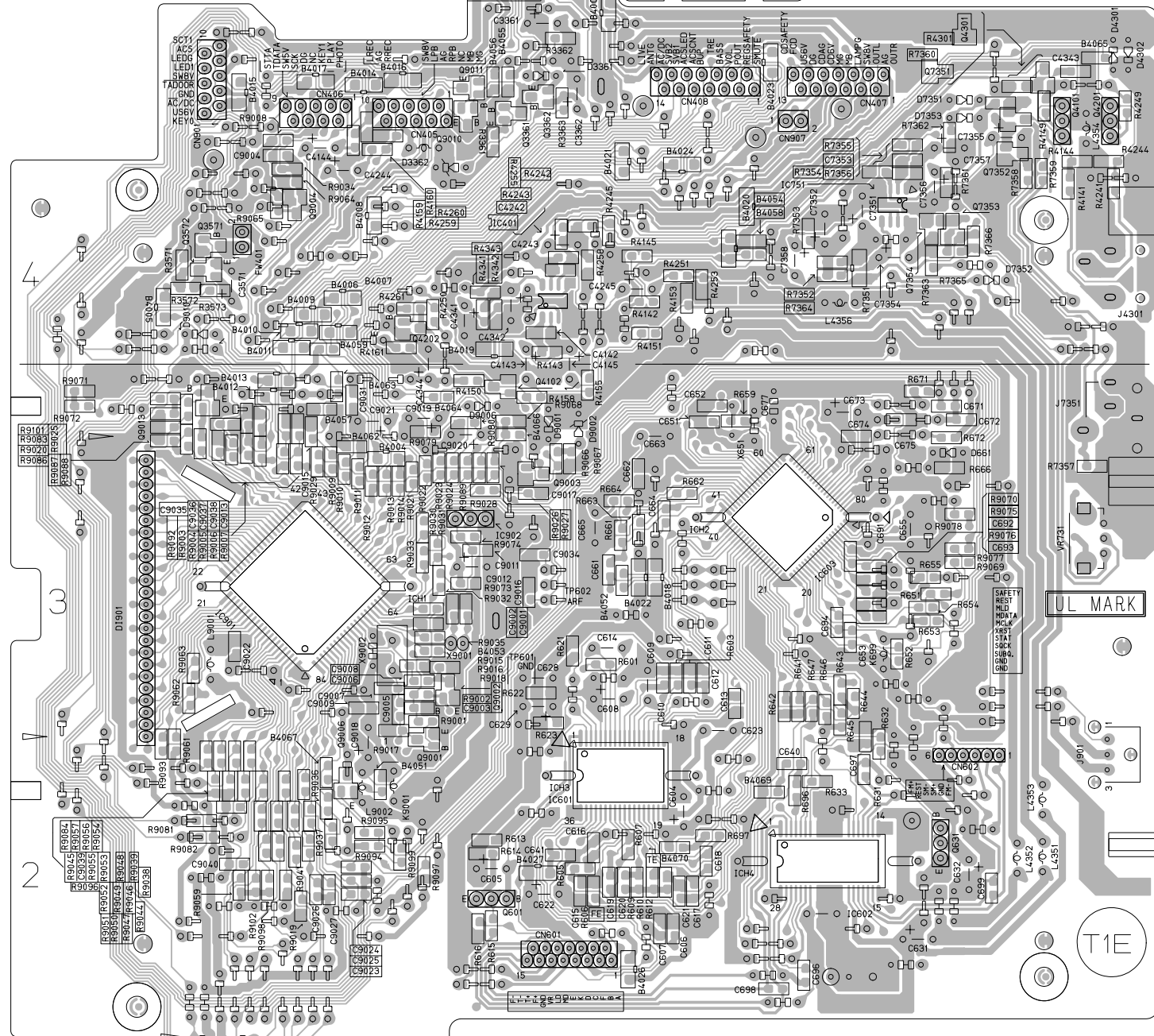
Lamp board



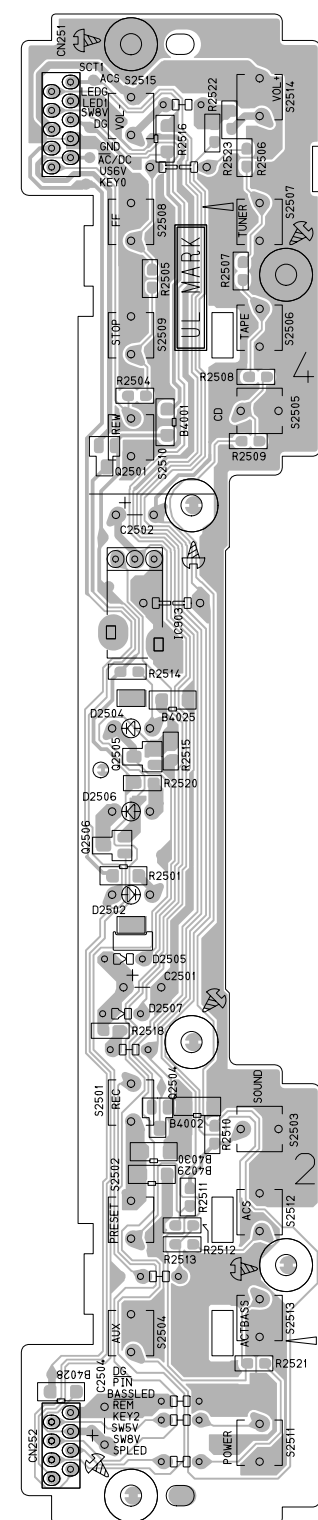
CD Door switch board



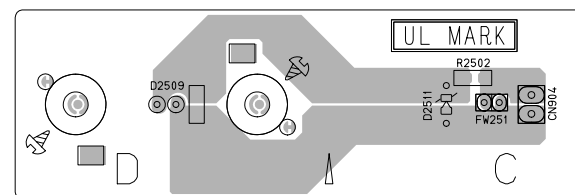
System control board



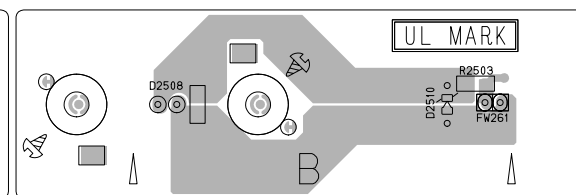
Key switch board



LED board (Left side)



LED board (Right side)



5

4

3

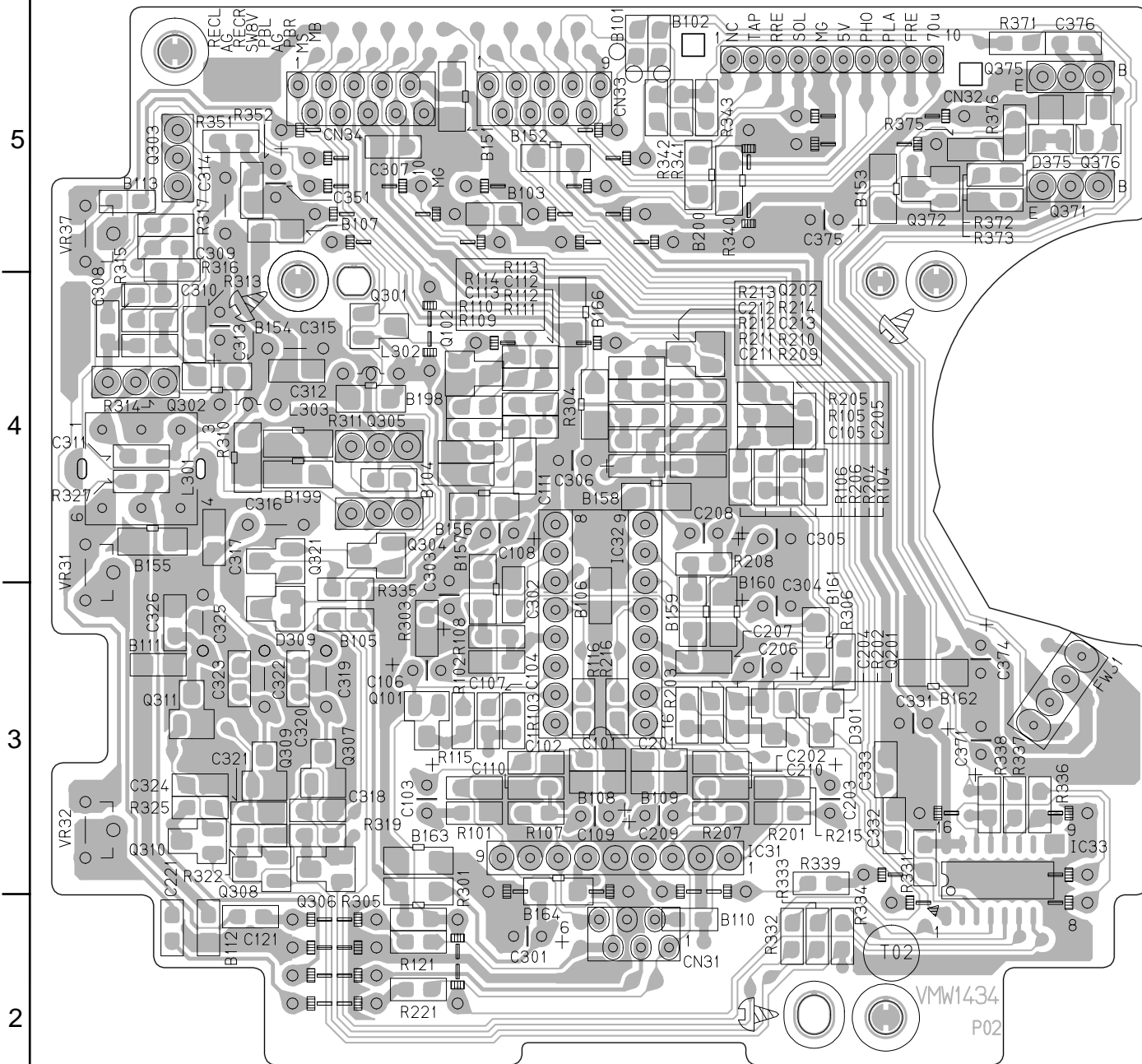
2

1

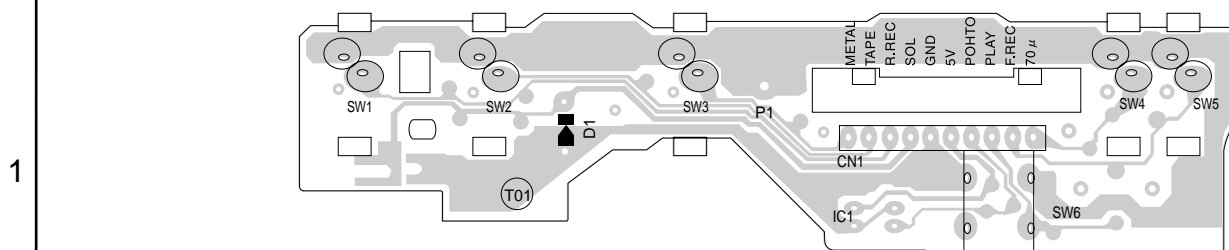
A B C 2-8 D E F G H



■ Head amplifier & mechanism board



■ Cassette switch board



**-MEMO-**